



Accreditação e Residência Médica

Conceito de Acreditação

Conceito de Acreditação: significa o **reconhecimento formal da qualidade de serviços**, oferecidos por uma instituição. Esse reconhecimento é baseado em **avaliação padronizada** por um **organismo independente**, que comprova que uma instituição atende a requisitos previamente definidos e que tem competência para realizar o seu papel de modo eficaz e seguro.

Diferentes formas de avaliação



Assessment= provas, avaliação individual



Evaluation= processos, avaliação de cursos



Regulação= autorização, fiscalização por governos



Acreditação= certificação de qualidade



Accreditação de escolas médicas

Objective 1.1 of the WHO (2016) [Global Strategy on Human Resources for Health: Workforce 2030](#) is that ‘by 2020, all countries will have established accreditation mechanisms for health training institutions’.

The accreditation of medical education – the **certification of the suitability of medical education programmes**, and of the competence of medical schools in the delivery of medical education – ensures **patient safety** and **competent practising doctors**. Accreditation of medical education is normally carried out by national governments, or by agencies receiving their authority from national governments.

Agencias acreditadoras (locais)

Agências acreditadoras locais (por país ou região), são:

Orgãos governamentais ou inter-governamentais, ou

Associações profissionais autorizadas ou reconhecidas por governos nacionais (Ministérios da Saúde, Educação ou ambos) ou por órgãos legislativos (Parlamentos), ou

Associações profissionais independentes, autorizadas ou reconhecidas por associação profissional ou científica com autoridade de apropriada.

WFME: faz a **meta-acreditação** dessas agências locais, como o SAEME

**WFME
Trilogy of
Standards:
Areas**

Basic medical education	Postgraduate medical education	Continuing professional development
1. Mission and Objectives	1. Mission and Outcomes	1. Mission and Outcomes
2. Educational Programme	2. Training Process	2. Learning Methods
3. Assessment of Students	3. Assessment of Trainees	3. Planning and Documentation
4. Students	4. Trainees	4. The Individual Doctor
5. Academic Staff/Faculty	5. Staffing	5. CPD Providers
6. Educational Resources	6. Training Settings and Educational Resources	6. Educational Context and Resources
7. Programme Evaluation	7. Evaluation and Training Process	7. Evaluation of Methods and Competencies
8. Governance and Administration	8. Governance and Administration	8. Organisation
9. Continuous Renewal	9. Continuous Renewal	9. Continuous Renewal

Benefits of WFME Recognition Status

- **Global mark of recognition**
- Recognition Status is the indicator to the medical education community, to students and to employers that the quality of medical education in schools or programmes accredited by that agency is to an appropriate and rigorous standard.
- **Learning and driving up standards**
- Through the process of recognition – self-evaluation and feedback from the expert visiting teams – WFME shares best practice and provides quality improvement measures. Some of these will be a condition of Recognition Status; others will be quality improvement recommendations.
- **ECFMG eligibility for medical graduates**
- ECFMG has [announced](#) that effective in 2023, eligibility for USMLE and employment as a doctor in the United States will be restricted to graduates from medical schools/programmes accredited by an agency which is recognised by the WFME Recognition Programme or to an equivalent standard.

WFME:
Objetivo:
melhorar a
qualidade da
Educação
Médica em todo
o mundo.



WFME trabalha com médicos, educadores e universidades em todo o mundo, desde sua fundação em 1972, pela Associação Médica Mundial World Medical Association ([WMA](#)) e pela Organização Mundial da Saúde World Health Organization ([WHO](#)).



WFME trabalha para melhorar o cuidado com a Saúde e fornecer Educação médica de alta qualidade para uma força de trabalho de aproximadamente 9,8 milhões de médicos (WHO, 2015) e estudantes em treinamento.



Prioridades atuais: promoção da acreditação, elevando os padrões da Educação Médica na graduação e pós-graduação, além da Educação continuada, com o Desenvolvimento e publicação dos padrões mínimos de qualidade e dos critérios de reconhecimento e acreditação ([WFME Recognition Programme](#)), [World Directory of Medical Schools](#).



WFME é uma organização não governamental, sem fins lucrativos, sediada na França, com escritórios em Londres, na França e Dinamarca. Está relacionada com a Organização Mundial da Saúde (WHO), onde representa a Educação Médica e a formação e capacitação de médicos em todo o mundo.

Standards WFME

- The WFME standards are a global expert consensus on the standards for medical schools and other providers of medical education throughout the continuum of medical education and training: Basic Medical Education, Post Graduate Medical Education, and Continuing Professional Development. The standards are divided into basic standards (minimum requirements) and quality improvement standards, accompanied by annotations and definitions.
- Standards are intended **to guide** the development and evaluation of medical education programmes.
- Standards provide **a framework** to be customised for the local context.
- Standards **do not** offer a universal core curriculum.
- Standards **are not** prescriptive.
- **Not all** of the WFME standards will be relevant in **every** setting.

Padrões (standards)

- Os padrões fortes como objetivo **orientar** o Desenvolvimento e avaliação dos programas de Educação Médica.
- Os padrões seguem uma **formatação** que deve ser **adaptada ao contexto** de cada local. Standards **do not** offer a universal core curriculum.
- Os padrões **não são** prescrições.
- **Nem todos os padrões da WFME serão relevantes; aplicáveis em todas as situações/locais.**

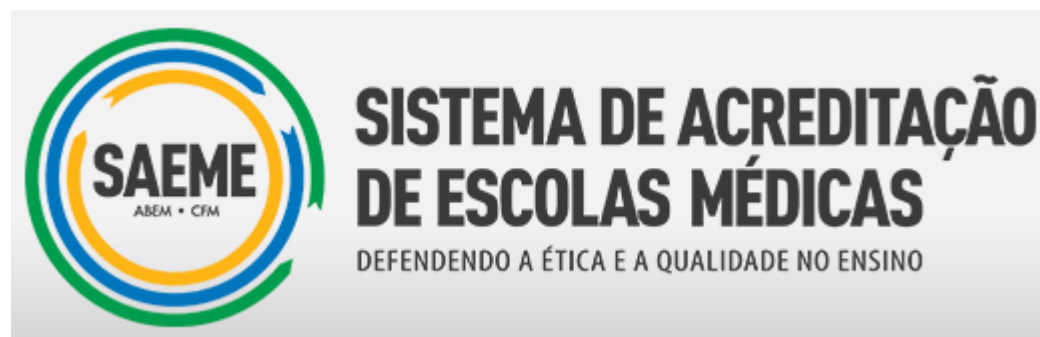
WFME Programa de reconhecimento (acreditação)

- The Recognition Programme delivers an independent, transparent and rigorous method of ensuring that accreditation of medical schools worldwide is at an internationally accepted and high standard. WFME evaluates compliance of accrediting agencies with pre-defined criteria.
- The Recognition Programme was established in response to two primary concerns:
- The existence of an accreditation system alone does not guarantee that the system will result in trustworthy decisions on the quality of programmes in medical education; this requires the accreditation system itself to operate in a robust, transparent and norm-referenced way.
- The rapid expansion in the number of medical schools worldwide has created a growing market for accreditation, and some private firms and individual consultants now offer an accreditation service of little worth.

Benefits of WFME Recognition Status

- **Global mark of recognition**
- Recognition Status is the indicator to the medical education community, to students and to employers that the quality of medical education in schools or programmes accredited by that agency is to an appropriate and rigorous standard.
- **Learning and driving up standards**
- Through the process of recognition – self-evaluation and feedback from the expert visiting teams – WFME shares best practice and provides quality improvement measures. Some of these will be a condition of Recognition Status; others will be quality improvement recommendations.
- **ECFMG eligibility for medical graduates**
- ECFMG has [announced](#) that effective in 2023, eligibility for USMLE and employment as a doctor in the United States will be restricted to graduates from medical schools/programmes accredited by an agency which is recognised by the WFME Recognition Programme or to an equivalent standard.

Accreditation in Brazil





SAEME

- Início: 2014
- Adesão voluntária
- Independente de órgãos governamentais
- ABEM & CFM
- Acreditação plena – validade 5 anos

Instrumento de Avaliação - SAEME

- “O instrumento de avaliação do Saeme se propõe a contribuir para o aprimoramento da oferta de ensino, direcionando uma autoavaliação institucional. Esse processo permite a identificação de áreas ou aspectos de excelência educacional e de áreas que necessitem de aprimoramento.
- Por ele, é possível avaliar os cursos de graduação de Medicina a partir de cinco domínios:
 - Gestão educacional
 - Programa educacional
 - Corpo docente
 - Corpo discente
 - Ambiente educacional

Processo de Acreditação

O Saeme é baseado em um trabalho desenvolvido por um grupo de pesquisadores que elaborou um instrumento e um roteiro para avaliar os cursos de medicina no Brasil, a partir de aspectos como o seu contexto e política institucional, projeto pedagógico, programa educacional, corpo docente e discente e infraestrutura.

É um processo de avaliação que utiliza os conceitos de suficiência e insuficiência, não sendo classificatório. O sistema permite ainda identificação de áreas ou aspectos de excelência educacional e de áreas que necessitem de aprimoramento.

O processo compreende uma etapa de **preenchimento online de um questionário** que abrange cinco dimensões (gestão educacional, programa educacional, corpo docente, corpo discente e infraestrutura), seguida de análise destes dados por uma Comissão de Avaliação; e **visita ao curso de medicina** por uma equipe composta por pelo menos três avaliadores.

Após este processo, a Comissão de Avaliação emite uma devolutiva à instituição de ensino e o resultado final, que pode ser classificado em três categorias: Acreditado, Acreditado com Ressalvas e Não Acreditado.



CERTIFICATE OF RECOGNITION STATUS

This is to certify that

System of Accreditation of Medical
Schools/Sistema de Acreditação de Escolas
Médicas
(SAEME)

Brasília
Brazil

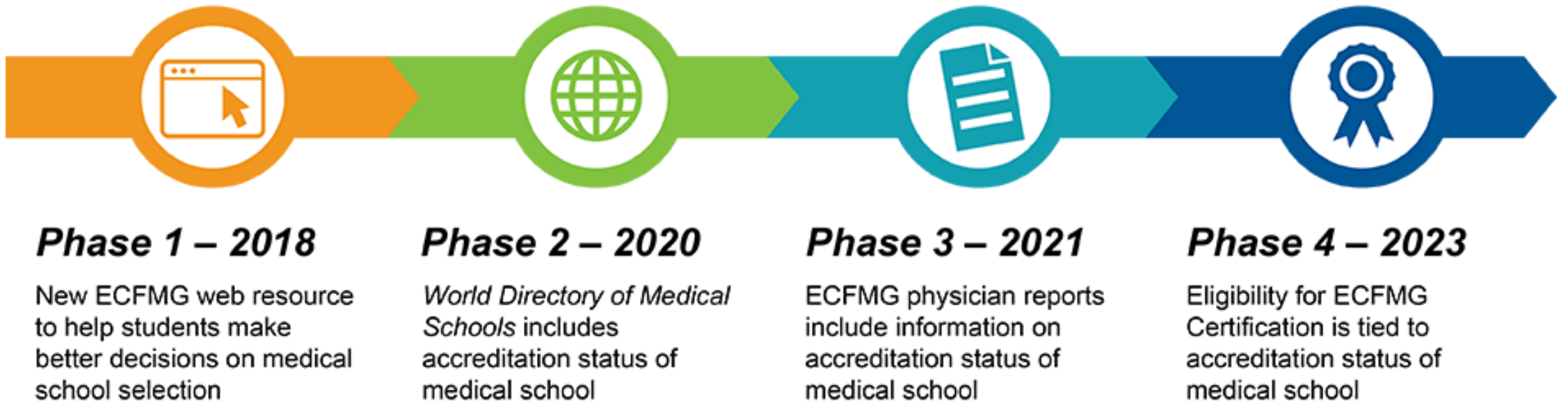
Has met the criteria for the WFME Recognition of Accreditation Programme and has been awarded Recognition Status until 30 April 2029, pending annual monitoring of continued compliance.

WFME Recognition Status confirms that the World Federation for Medical Education (WFME) is satisfied with the accreditation process, post-accreditation monitoring, and decision making process of SAEME as it relates to basic medical education schools or programmes. WFME Recognition Status of an agency confers the understanding that the quality of medical education in its accredited schools is to an appropriate and rigorous standard.

Medical School Accreditation Requirement for ECFMG Certification

The 2023 Medical School Accreditation Requirement was established by ECFMG (Educational Commission for Foreign Medical Graduates) in 2010 to stimulate international accreditation efforts and enhance the **quality of medical education worldwide**. The requirement is intended to encourage the development and implementation of standards for evaluating undergraduate medical education, to provide greater assurance to both medical students and the public that they will be appropriately trained.

Since the announcement in 2010, ECFMG has developed a transition plan for the implementation of the 2023 Accreditation Requirement. This four-phase plan will provide medical students, graduate medical education (GME) program directors, and others with information to guide their decision making.



2023 ECFMG

- An extra stimulus to make sure that the standards and processes of accreditation agencies are satisfactory has come from the policy of the Educational Commission for Foreign Medical Graduates (ECFMG) of the USA on accreditation. ECFMG stated in 2010 that “...effective in 2023, physicians applying for ECFMG Certification will be required to graduate from a medical school that has been appropriately accredited. To satisfy this requirement, the physician’s medical school must be accredited through a formal process that uses criteria comparable to those established for U.S. medical schools by the Liaison Committee on Medical Education (LCME) or that uses other **globally accepted criteria**, such as those put forth by the **World Federation for Medical Education (WFME)**”. It is likely that this policy will encourage many countries that do not, as yet, have accreditation systems for basic medical education to develop them.

About ECFMG

- ECFMG is a world leader in promoting quality health care—serving physicians, members of the medical education and regulatory communities, health care consumers, and those researching issues in medical education and health workforce planning.
- International medical graduates (IMGs) comprise nearly one-quarter of the U.S. physician workforce. Certification by ECFMG is the standard for evaluating the qualifications of these physicians before they enter U.S. graduate medical education (GME), where they provide supervised patient care. ECFMG Certification also is a requirement for IMGs to take Step 3 of the three-step [United States Medical Licensing Examination](#)[®] ([USMLE](#)[®]) and to obtain an unrestricted license to practice medicine in the United States.



LCME – Estados Unidos

The LCME is jointly sponsored by the Association of American Medical Colleges ([AAMC](#)) and the American Medical Association ([AMA](#)). The AAMC and the AMA each appoint an LCME Co-Secretary (known jointly as the Secretariat) and maintain accreditation offices in Washington, D.C. and Chicago, IL, respectively.



A Residência Médica no Brasil é uma modalidade de ensino de pós-graduação destinada a médicos, sob a forma de curso de especialização.

A Residência Médica funciona em instituições de saúde, sob a orientação de profissionais médicos de elevada qualificação ética e profissional. É o que prevê o decreto 80.281, de 5 de setembro de 1977, que a regulamenta.



MINISTÉRIO DA
EDUCAÇÃO



PRESSUPOSTOS DOS PROGRAMAS DE RESIDÊNCIA EM SAÚDE

