

Advancing IPE in Health and Education Policies.

*2nd Regional Technical Meeting
Interprofessional Education in Health Care
Dec 5-6, Brasilia*

John H.V.Gilbert, C.M., Ph.D., LL.D., FCAHS
Professor Emeritus, University of British Columbia.
Adjunct Professor, Dalhousie University.

DR. TMA Pai Endowment Chair in Interprofessional Education & Practice, Manipal University.
Adjunct Professor, University of Technology, Sydney
Senior Scholar, WHO Collaborating Centre on Health Workforce Planning & Research, Dalhousie University.
Founding Chair, Canadian Interprofessional Health Collaborative.

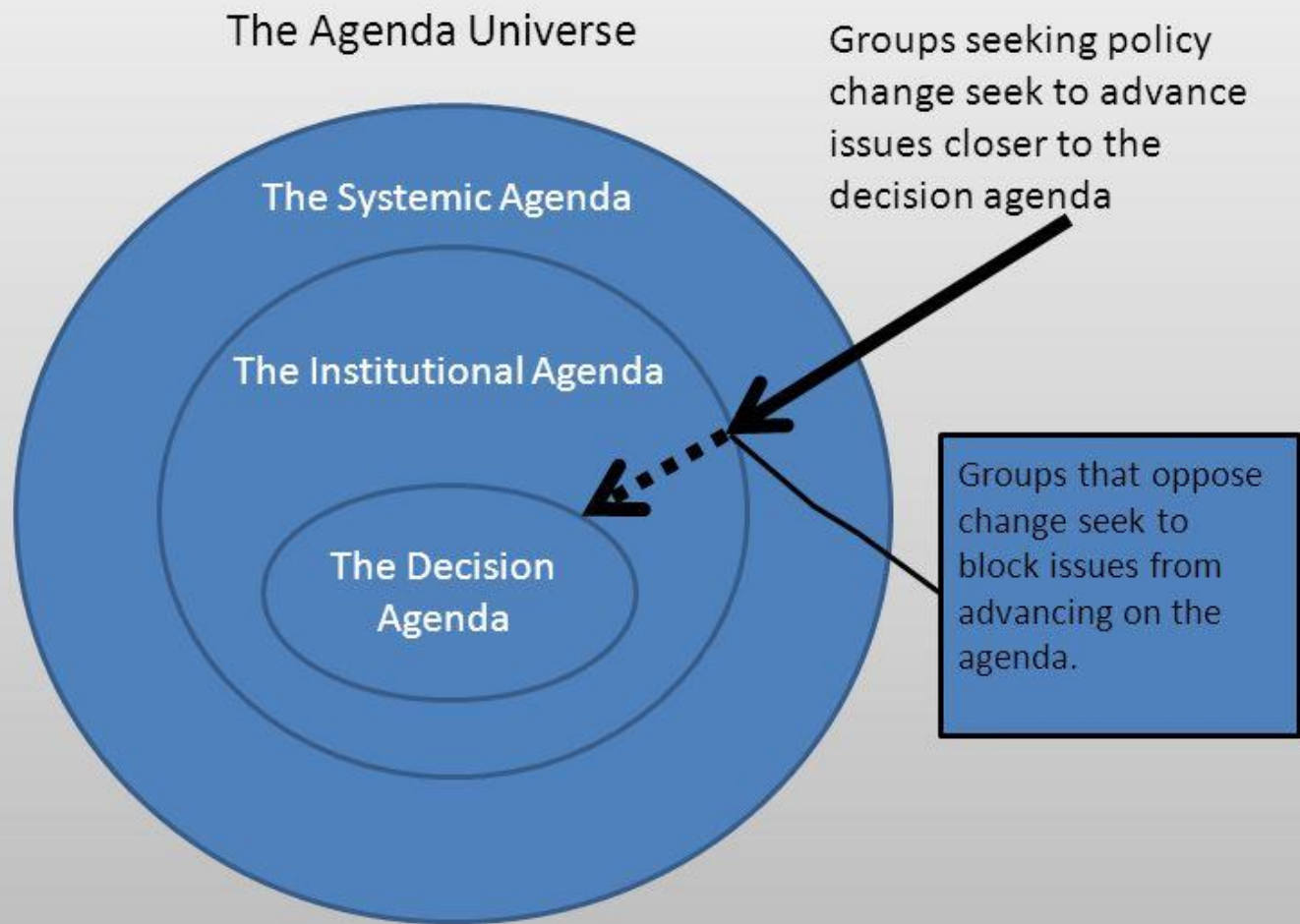


Figure 6.1: Levels of the Agenda

From Thomas A. Birkland, *An Introduction to the Policy Process*, 3rd ed. Armonk, NY: M.E. Sharpe.

5

IPE - The Scope for Policies

IPE encompasses:

Interprofessional collaborative practice, and
Interprofessional collaborative care.

IPE is a continuum:

From pre-licensure through post-licensure
years

IPE - Support A Vision & Mission

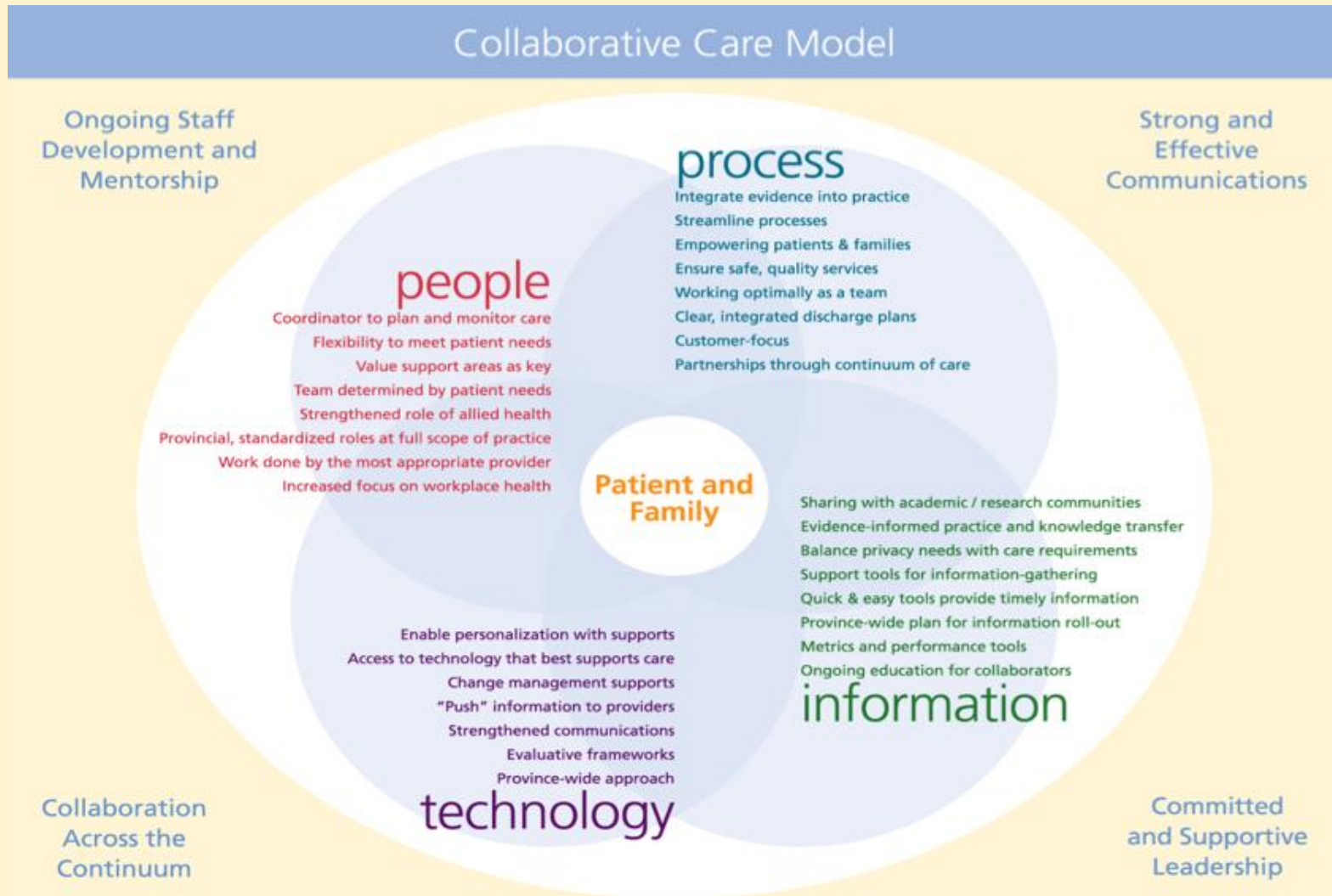
Foster and encourage *a culture* that:

- supports interdisciplinary, and interprofessional partnerships,

and is

- built on collaborative educational and practice environments.

IPE - Support Curricular Change



Nova Scotia Health, Canada. October 2008

IPE - Support Realistic Resources

Money

People

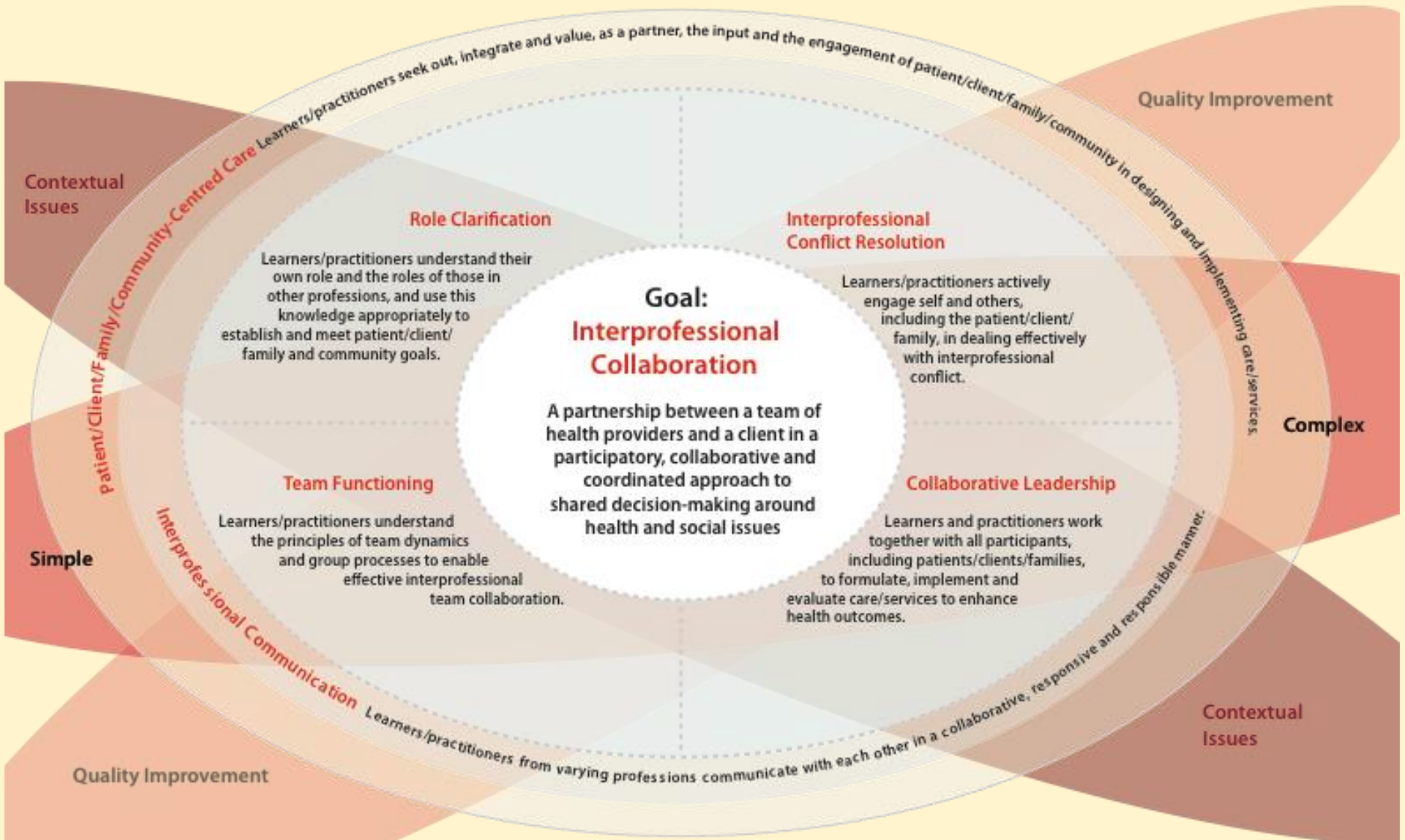
Space



IPE - Support Strategic Goals

- Competency based, interactive curricula.
- Case based IP practice based teaching units.
- Research & Evaluation.
- Accreditation & Scopes of Practice.
- Legislation.

Tackle the hidden curriculum.



Canadian Interprofessional Health Collaborative 2010

IPE - Support the Leaders

- Give time to develop the programs
- Give time to devote to IPE in the face of Faculty, departmental demands and requirements.

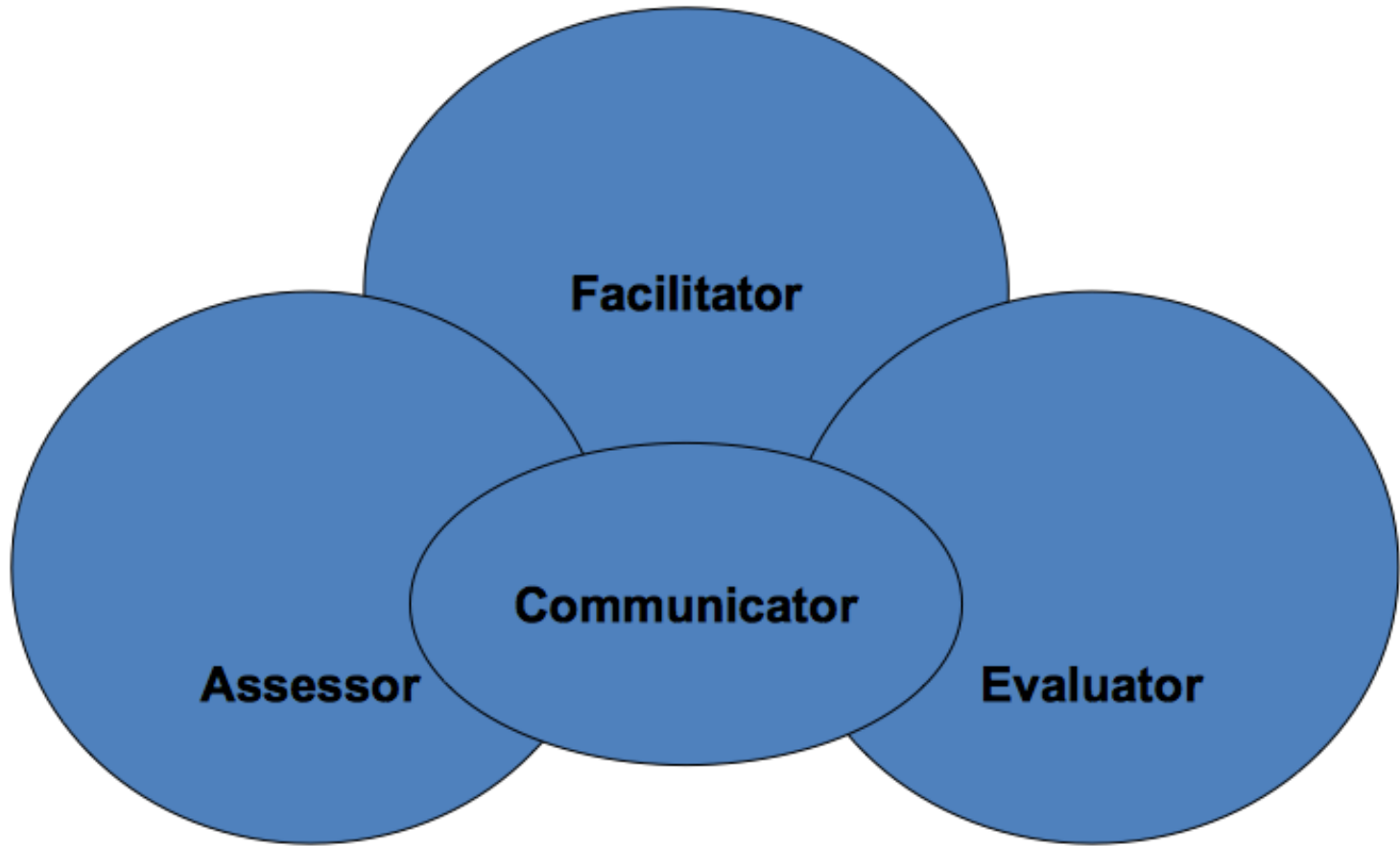
IPE - Support Faculty & Facilitators

- Recruit, appoint, prepare.
- Negotiate release time.
- Budget payment for service.
- Support recognition schemes.

IPE - Support the Practice Environment

- Must be an integral part of the clinical/practice culture.
- Must be the lived experience of students and practitioners.
- Must be understood and agreed on by all stakeholders.

IPE - Support the Practice Educator: Engage, Encourage, Reward



(Cross, V., Moore, A., Morris, J., Caladine, L., Hilton, R., & H. Bristow. (2006). *The Practice-Based Educator A Reflective Tool for CPD and Accreditation*. Chichester, UK: John Wiley.)

IPE - Support the Students

Use social media.

Use small group discussions.

Use patient stories - to understand the various roles of the health professions in the care of the patient.

IPE - Support Patient Engagement

“I’m Not A Hockey Puck.

Nothing about me, nothing without me”



IPE - Support A Community of Practice

- **Purpose.** Integrated interprofessional collaborative person centred practice and care.
- **People.** Engage individuals and organizations across the extended university campus.

IPE: What we have learned

Policies Make Programs

IPE CANNOT be implemented:

- from the edge of a desk, **or**
- on wet weekends, **or**
- in the early hours of the morning, **or**
- in a faculty member's "spare time",
or

with minimal money